

**Connector pin assignment CE-65 Profibus Encoder (1 x 10-pole MINI-COMBICON)**

**General note:**

If the encoder is **the last station in the profibus line**, the bus line must be terminated at the encoder connector with appropriate resistances according to figure 1. The other encoders don't need any termination.

The profibus also works when the encoder is removed, except if the terminators are missing.

Cables with twisted core pairs, recommended by Siemens, should be used for wiring the RS485 signals.

In the EPROG dialogue, the station addresses for the profibus are entered directly from 3 to 99.

Figure 1

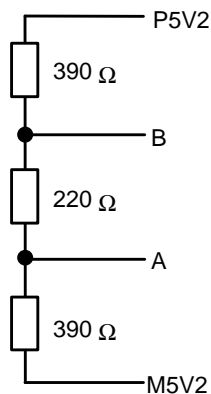
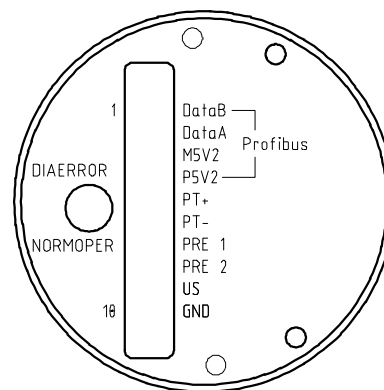


Figure 2



**Explanation of terms:**

CE-65:	Compact Encoder with Ø 65 mm
MINI-COMBICON:	Connector Phoenix MINI-COMBICON 8 A / 125 V, grid 3.81 mm
US:	Supply voltage, 11-27 V DC
US-input:	1-level > +8 V, 0-level < +2 V, up to ±35 V, 5 kOhm
US-output:	1-level > US-2V, 0-level < 1 V, up to 100 mA

**X1 – MINI-COMBICON 10-pole**

Pin 1	Profibus DataB
Pin 2	Profibus DataA
Pin 3	Profibus M5V2
Pin 4	Profibus P5V2
Pin 5	RS485 for PC adapter and EPROG +
Pin 6	RS485 for PC adapter and EPROG –
Pin 7	US-input for 1. preset
Pin 8	US-input for 2. preset
Pin 9	US-supply
Pin 10	0 V-supply